

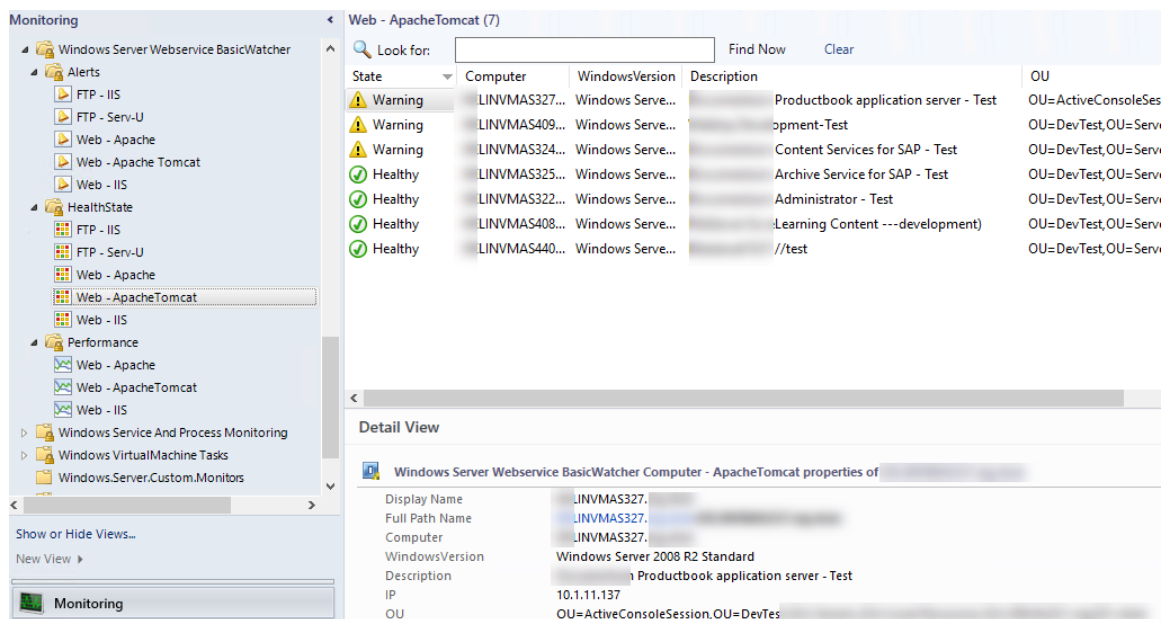
# Monitor Apache, Apache Tomcat and IIS with SCOM

## Introduction

**Windows.Server.Webservice.BasicWatcher** is a Management Pack for SCOM which monitors common web- and ftp services on Windows.

## Features:

Identify and monitors servers that host Apache, Apache Tomcat, IIS, FTP on IIS and Serv-U FTP



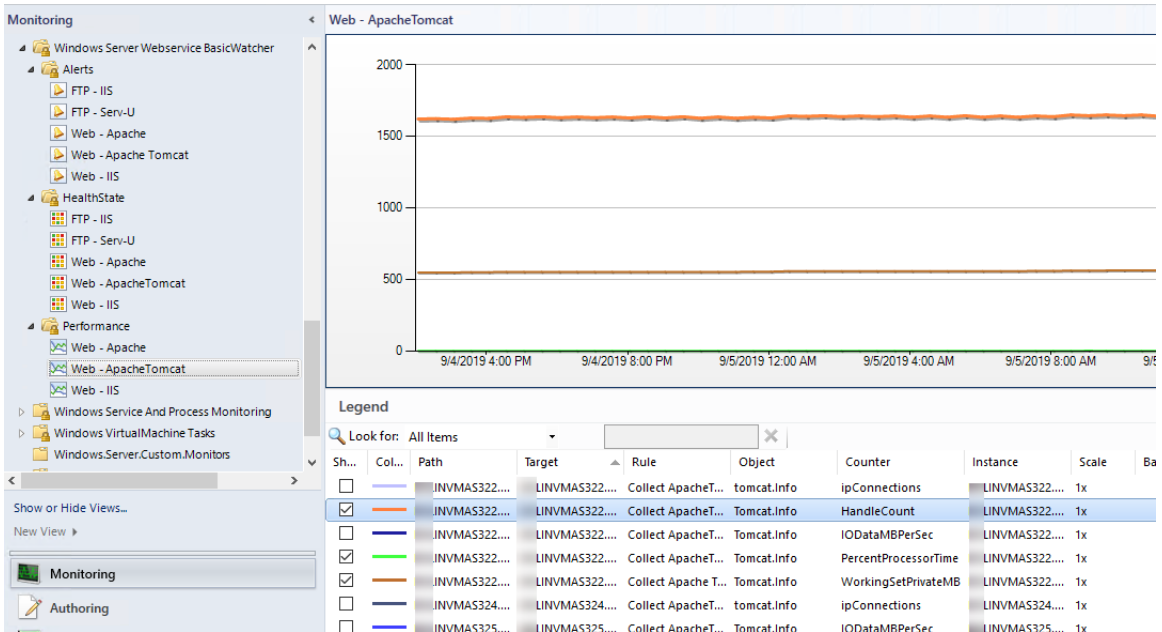
The screenshot displays the SCOM Monitoring console interface. On the left, a tree view shows the hierarchy of monitoring packs, including 'Alerts', 'HealthState', and 'Performance'. The main area shows a table of monitored services under the heading 'Web - ApacheTomcat (7)'. The table has columns for State, Computer, WindowsVersion, Description, and OU. Below the table, a 'Detail View' pane shows the properties of a selected service.

State	Computer	WindowsVersion	Description	OU
Warning	LINVMAS327...	Windows Serve...	Productbook application server - Test	OU=ActiveConsoleSes
Warning	LINVMAS409...	Windows Serve...	opment-Test	OU=DevTest,OU=Serv
Warning	LINVMAS324...	Windows Serve...	Content Services for SAP - Test	OU=DevTest,OU=Serv
Healthy	LINVMAS325...	Windows Serve...	Archive Service for SAP - Test	OU=DevTest,OU=Serv
Healthy	LINVMAS322...	Windows Serve...	Administrator - Test	OU=DevTest,OU=Serv
Healthy	LINVMAS408...	Windows Serve...	.Learning Content ---development)	OU=DevTest,OU=Serv
Healthy	LINVMAS440...	Windows Serve...	//test	OU=DevTest,OU=Serv

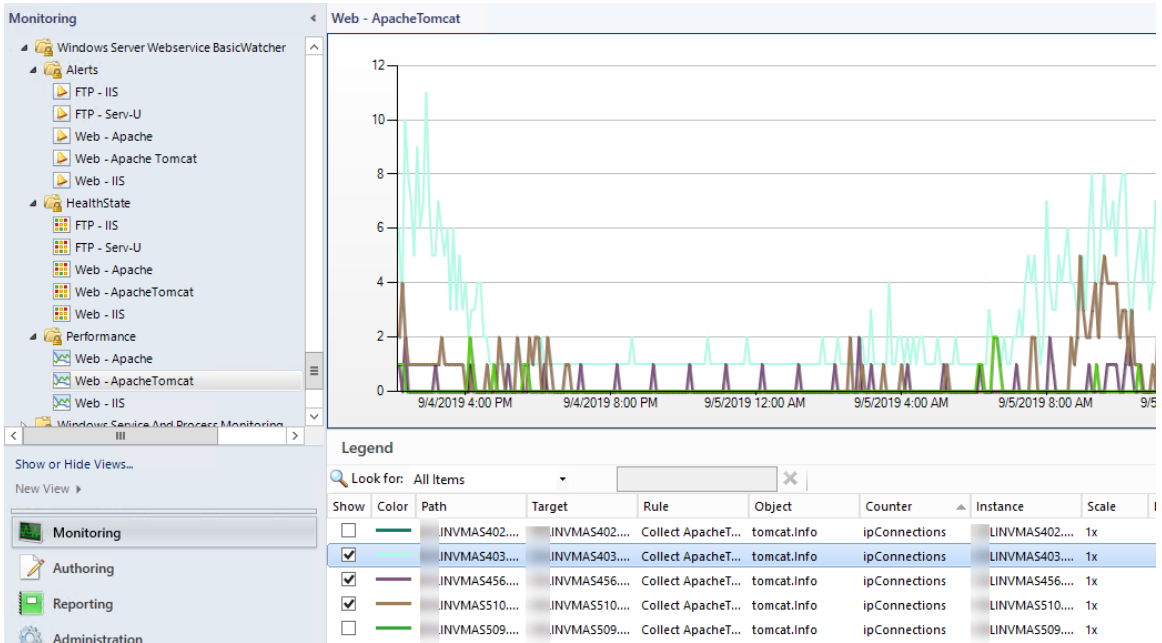
  

Detail View	
Display Name	LINVMAS327...
Full Path Name	LINVMAS327...
Computer	LINVMAS327...
WindowsVersion	Windows Server 2008 R2 Standard
Description	Productbook application server - Test
IP	10.1.11.137
OU	OU=ActiveConsoleSession,OU=DevTes

Collect key performance information like Handles, RAM and CPU usage of the services



Check how many connections averagely are made



## Change History

Date	Build No.	Changes
2019-09-03	1.0.0.248	Initial Upload to GitHub
2019-10-28	1.0.0.285	<b>Fixed:</b>  Bug in discovery when server description wasn't maintained. (try & catch was missing ErrorPreference )  <b>Added:</b> <ul style="list-style-type: none"><li>• New properties for IIS.Web, Tomcat and Apache to store version information and the service-user</li><li>• New perf collection rule: PercentMemoryUsed for all classes</li><li>• Existing perf collection rules for IIS.FTP and Serv-U.FTP</li></ul>

## Contents

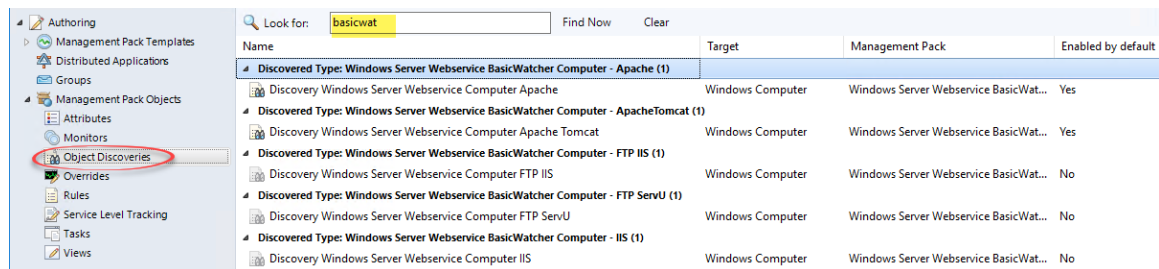
Introduction.....	1
Features:.....	1
Change History .....	3
Configuration.....	4
New Management Pack for customizations.....	4
Enable disabled components .....	5
Usage .....	7
Health State Information.....	7
Management Pack Components (Reference) .....	8
Classes .....	8
Discoveries.....	8
Monitors (Unit).....	9
Rules (Performance Collection).....	9
Views .....	10
License Terms .....	11

## Configuration

### New Management Pack for customizations

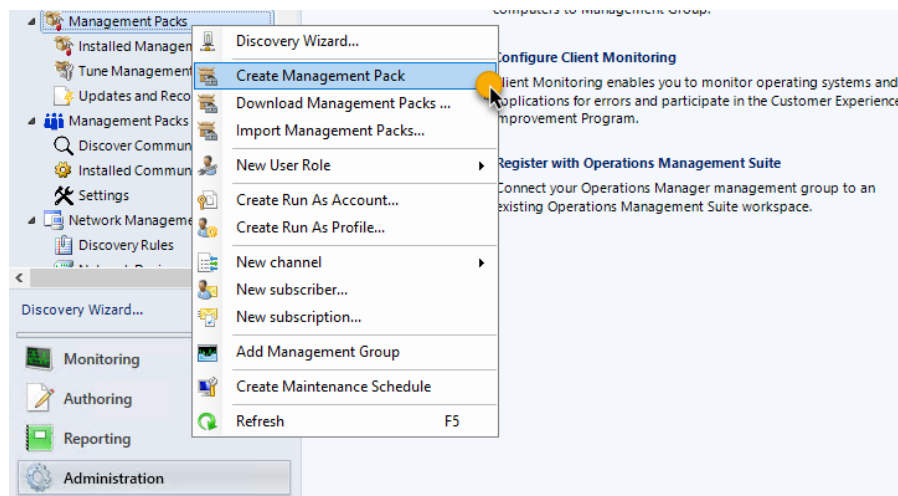
By default, only servers hosting Apache and Apache Tomcat are discovered.

If also IIS, IIS-FTP or Serv-U (FTP) shall be found – and later also monitored, the discovery jobs insight of this Management Pack needs to be enabled.

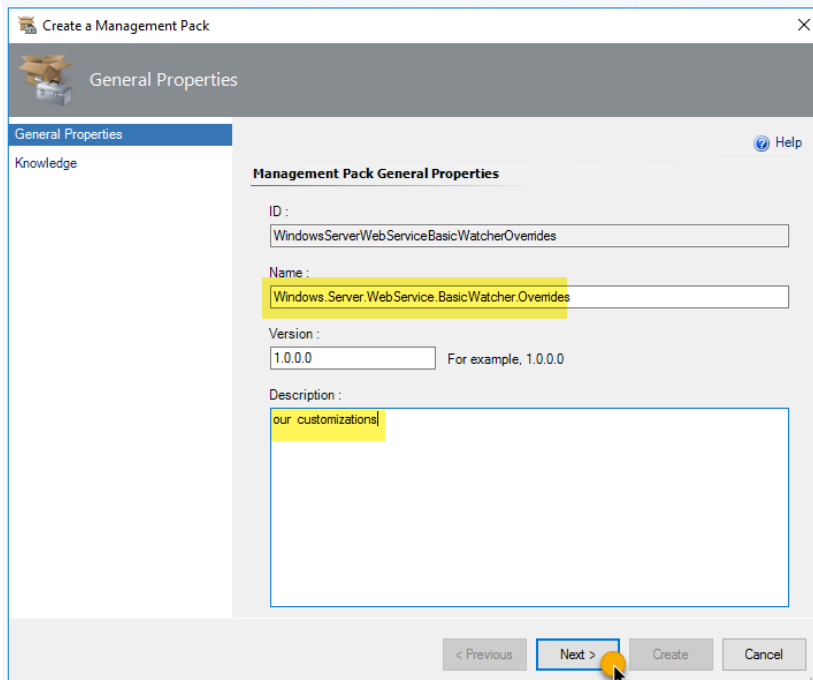


Name	Target	Management Pack	Enabled by default
<b>Discovered Type: Windows Server Webservice BasicWatcher Computer - Apache (1)</b>			
Discovery Windows Server Webservice Computer Apache	Windows Computer	Windows Server Webservice BasicWat...	Yes
<b>Discovered Type: Windows Server Webservice BasicWatcher Computer - ApacheTomcat (1)</b>			
Discovery Windows Server Webservice Computer Apache Tomcat	Windows Computer	Windows Server Webservice BasicWat...	Yes
<b>Discovered Type: Windows Server Webservice BasicWatcher Computer - FTP IIS (1)</b>			
Discovery Windows Server Webservice Computer FTP IIS	Windows Computer	Windows Server Webservice BasicWat...	No
<b>Discovered Type: Windows Server Webservice BasicWatcher Computer - FTP ServU (1)</b>			
Discovery Windows Server Webservice Computer FTP ServU	Windows Computer	Windows Server Webservice BasicWat...	No
<b>Discovered Type: Windows Server Webservice BasicWatcher Computer - IIS (1)</b>			
Discovery Windows Server Webservice Computer IIS	Windows Computer	Windows Server Webservice BasicWat...	No

To create a new Management Pack, change to Administration, select the Management Packs section and right click. In the menu select Create Management Pack.



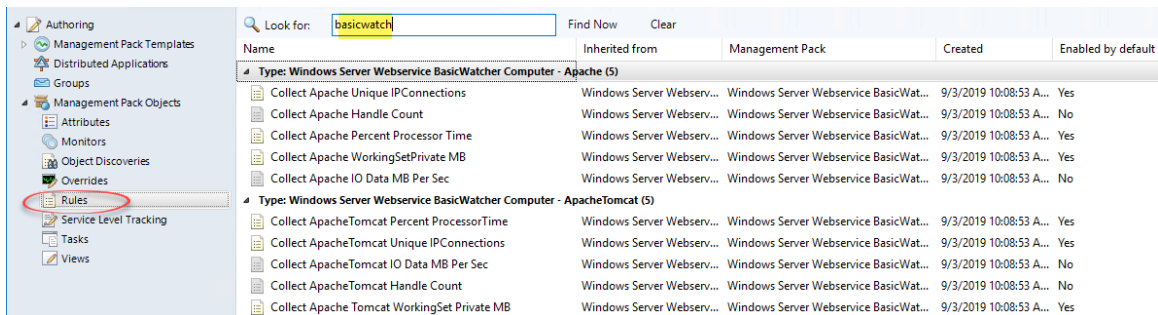
Name the Management Pack Windows.Server.WebService.BasicWatcher.Overrides (suggestion) and proceed the dialog with confirming the default settings.



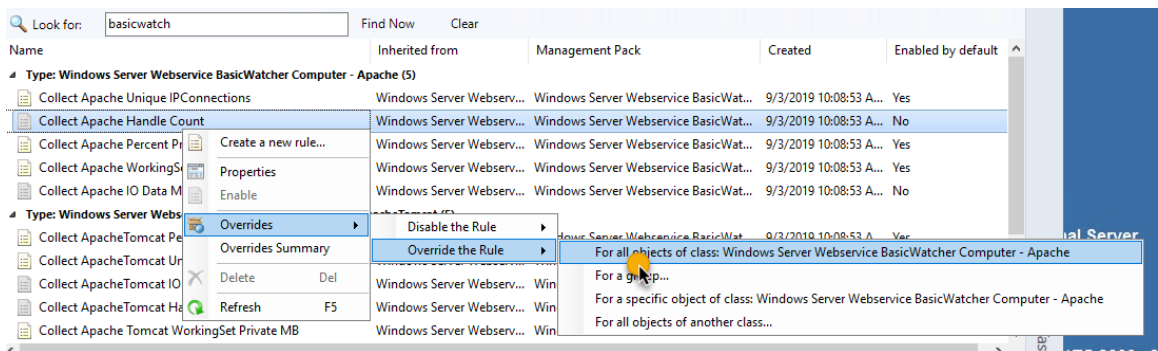
## Enable disabled components

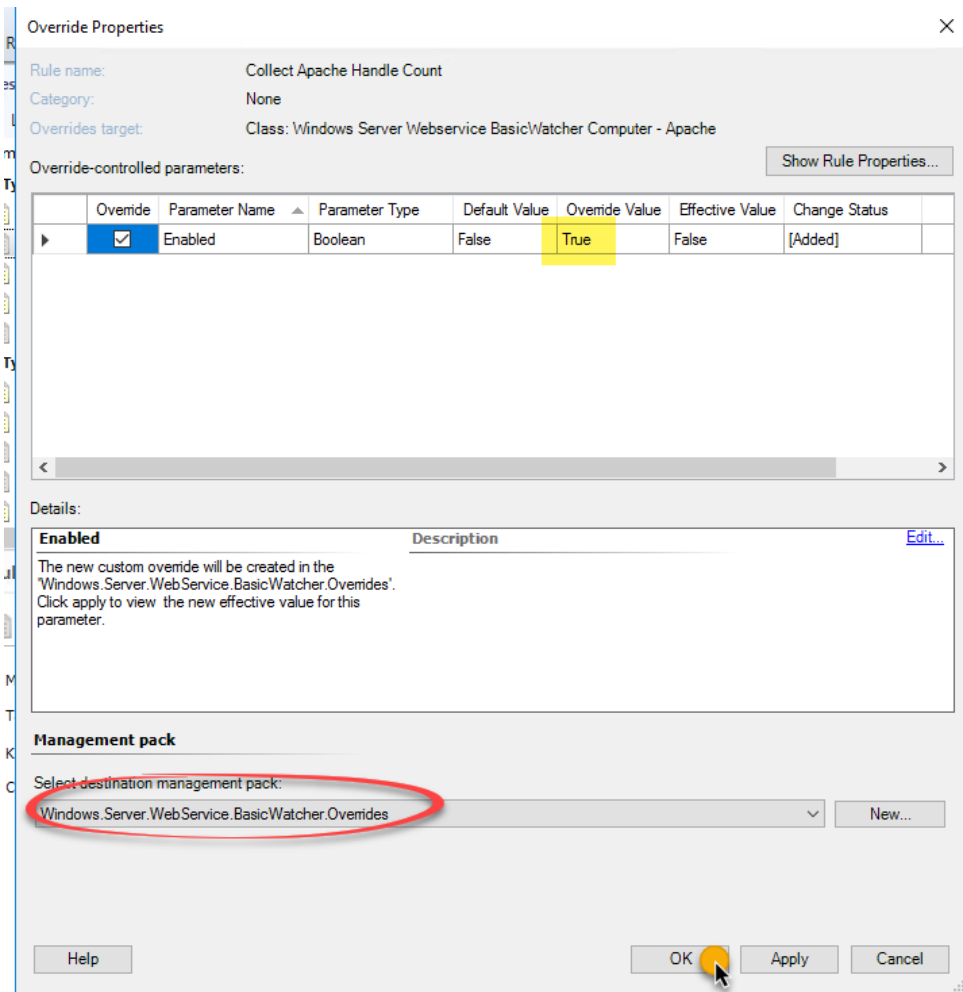
Beside of discoveries also some performance rules are disabled by default.

To enable them, switch to Authoring, select Rules and search for basicwatch



Then, right click the rule you want to change and click 'override' and override the default for all objects of that class for example.





Enable the setting and store the configuration in the Management Pack previously created.

## Usage

After a while discovered objects appear in the SCOM console.

The screenshot shows the SCOM console interface. On the left is a navigation tree with categories like Alerts, HealthState, and Performance. The main area displays a table of monitoring results for 'Web - ApacheTomcat (7)'. Below this is a 'Detail View' for a selected object.

State	Computer	WindowsVersion	Description	OU
Warning	LINVMA327...	Windows Serve...	Productbook application server - Test	OU=ActiveConsoleSes
Warning	LINVMA327...	Windows Serve...	oment-Test	OU=DevTest,OU=Serv
Warning	LINVMA324...	Windows Serve...	Content Services for SAP - Test	OU=DevTest,OU=Serv
Healthy	LINVMA325...	Windows Serve...	Archive Service for SAP - Test	OU=DevTest,OU=Serv
Healthy	LINVMA322...	Windows Serve...	Administrator - Test	OU=DevTest,OU=Serv
Healthy	LINVMA327...	Windows Serve...	Learning Content ---development)	OU=DevTest,OU=Serv
Healthy	LINVMA327...	Windows Serve...	//test	OU=DevTest,OU=Serv

Detail View	
Windows Server Webservice BasicWatcher Computer - ApacheTomcat properties of ...	
Display Name	LINVMA327...
Full Path Name	LINVMA327...
Computer	LINVMA327...
WindowsVersion	Windows Server 2008 R2 Standard
Description	Productbook application server - Test
IP	10.1.11.137
OU	OU=ActiveConsoleSession,OU=DevTes

## Health State Information

The monitors work as follows:

Windows Service State	Monitoring Result
Running	Healthy
Manual or Disabled	Warning
Stopped	Error

## Management Pack Components (Reference)

### Classes

Id
Windows.Server.WebService.BasicWatcher.Computer
Windows.Server.BasicWatcher.Computer.IIS
Windows.Server.WebService.BasicWatcher.Computer.Apache
Windows.Server.WebService.BasicWatcher.Computer.ApacheTomcat
Windows.Server.WebService.BasicWatcher.Computer.FTP.IIS
Windows.Server.WebService.BasicWatcher.Computer.FTP.ServU

### Discoveries

Id	Enabled
Discovery.Windows.Server.WebService.Computer.Apache	Yes
Discovery.Windows.Server.WebService.Computer.ApacheTomcat	Yes
Discovery.Windows.Server.WebService.Computer.IIS	No
Discovery.Windows.Server.WebService.Computer.FTP.IIS	No
Discovery.Windows.Server.WebService.Computer.FTP.ServU	No



## Monitors (Unit)

Id	Enabled	Alerting Enabled
Monitor.WebService.Apache	Yes	Yes
Monitor.WebService.ApacheTomcat	Yes	Yes
Monitor.WebService.IIS	Yes	Yes
Monitor.WebService.FTP.IIS	Yes	Yes
Monitor.WebService.FTP.Serv-U	Yes	Yes

## Rules (Performance Collection)

Id	Enabled
Perf.Apache.HandleCount	No
Perf.Apache.IODataMBPerSec	No
Perf.Apache.IPConnections	Yes
Perf.Apache.PercentProcessorTime	Yes
Perf.Apache.WorkingSetPrivateMB	Yes
Perf.Apache.PercentMemoryUsed	Yes
Perf.ApacheTomcat.HandleCount	No
Perf.ApacheTomcat.IODataMBPerSec	No
Perf.ApacheTomcat.IPConnections	Yes
Perf.ApacheTomcat.PercentProcessorTime	Yes
Perf.ApacheTomcat.WorkingSetPrivateMB	Yes
Perf.ApacheTomcat.PercentMemoryUsed	Yes
Perf.IIS.Web.HandleCount	No
Perf.IIS.Web.IODataMBPerSec	No
Perf.IIS.Web.IPConnections	Yes
Perf.IIS.Web.PercentProcessorTime	Yes
Perf.IIS.Web.WorkingSetPrivateMB	Yes

<b>Perf.IIS.Web.PercentMemoryUsed</b>	<b>Yes</b>
<b>Perf.IIS.FTP.HandleCount</b>	<b>No</b>
<b>Perf.IIS.FTP.IODataMBPerSec</b>	<b>No</b>
<b>Perf.IIS.FTP.IPConnections</b>	<b>Yes</b>
<b>Perf.IIS.FTP.PercentProcessorTime</b>	<b>Yes</b>
<b>Perf.IIS.FTP.WorkingSetPrivateMB</b>	<b>Yes</b>
<b>Perf.IIS.FTP.PercentMemoryUsed</b>	<b>Yes</b>

## Views

<b>Id</b>
<b>View.Alerts.FTP.IIS</b>
<b>View.Alerts.FTP.ServU</b>
<b>View.Alerts.WebService.Apache</b>
<b>View.Alerts.WebService.ApacheTomcat</b>
<b>View.Alerts.WebService.IIS</b>
<b>View.Perf.Apache</b>
<b>View.Perf.ApacheTomcat</b>
<b>View.Perf.IIS.Web</b>
<b>View.Perf.IIS.FTP</b>
<b>View.Perf.ServU.FTP</b>
<b>View.State.Webservice.Apache</b>
<b>View.State.Webservice.ApacheTomcat</b>
<b>View.State.Webservice.IIS</b>
<b>View.State.Webservice</b>
<b>View.State.FTP.ServU</b>
<b>View.State.FTP.IIS</b>

## License Terms

**Windows.Server.Webservice.BasicWatcher** Copyright (C) 2019 Ruben Zimmermann (Juanito99)

This program is free software: you can redistribute it and/or modify it under the terms of the GNU General Public License as published by the Free Software Foundation, either version 3 of the License, or (at your option) any later version.

This program is distributed in the hope that it will be useful, but WITHOUT ANY WARRANTY; without even the implied warranty of MERCHANTABILITY or FITNESS FOR A PARTICULAR PURPOSE. See the GNU General Public License for more details.

You should have received a copy of the GNU General Public License along with this program. If not, see <http://www.gnu.org/licenses/>.